

FELSTED

JUNE 2020

FOCUS

COMMUNITY MAGAZINE

Features:

Editor's Letter: 3

Clubs: 4

Churches: 5

Felsted Memorial Hall: 6

Felsted Parish Council: 7/8

New Surgery: 9

Felsted Hub: 10/11

Felsted Places: 12/13

Competition: 14

Felsted People: 15

Recipe: 16

VE Day: 17/20

Felsted School: 22/23

District Councillors'
Corner: 24/25

Puzzles: 27

Spectacular Trees: 28/29

Gardening Tips: 30

Local Food

Directory: 31/32

Local Services Directory: 33

Trade Directory: 34/35



Clear Sight Drones

Aerial photography

- * Property
- * Roof surveys
- * Boundary identification



contact@clearsightdrones.com

www.clearsightdrones.com

01371 820330 / 07979 054654



www.astragraphic.co.uk

**GRAPHIC DESIGN
SOLUTIONS TO
SUIT YOU...**

AG
astragraphic
DESIGN

▼ **07771 898471**

▼ info@astragraphic.co.uk

R. Wheeler
ROOFING SERVICES



**TILING | SLATING | LEADWORK | GUTTERING | FLAT
ROOFS | CHIMNEYS | ALL REPAIRS**

| Free Estimates |
| All work guaranteed |
| Over 30 Years Experience |
| Honest & Expert Advice |

Home: 01371 811308

Mobile: 07951 349837

RWheelerRoofing@gmail.com

Note from the Editor

Once again, we have had an amazing response for articles for this month's magazine, so please keep sending them in, along with your photographs. Speaking of which, I am pleased to say that we are running both a painting and photographic competition in this edition. The results will be seen and announced in August's publication.

It was inspiring to see during lockdown how VE75 day was celebrated in the village, from the front garden tea parties to the array of coloured bunting cheering up buildings and hedges. There are still many with us who remember those times and it was good to show them our respect for what they went through. We mustn't, of course, forget Kier who played the bagpipes around the village to cheer us all up!

Lockdown is changing and by the time you read this the rules will have changed, but remember it is up to all of us to keep each other safe.

Janice

Editorial Team:

Janice Ratcliffe
felstededitor@gmail.com
Margaret Attwood
Sarah Gale

Graphic design and layout:

Astragraphic Design
info@astragraphic.co.uk
www.astragraphic.co.uk

Print:

Paul Clark Printing

Parish Council:

01371 823071
www.felsted-pc.gov.uk



Clear Sight Drones

Felsted Friendship Club

Self-isolating means that the Felsted Friendship Club is not currently meeting, however, the committee is keeping in telephone contact with our members. I suspect it will be several months yet before we can meet again in the Memorial Hall. I'm sure that most members will have enjoyed watching the VE75 celebrations on the television recently and may recall last year one of our guest speakers – local resident Dicky Howett - who brought along, from his collection, a wartime microphone used by the BBC.



We congratulate Alice Farrell on celebrating her 90th birthday, and with sadness report the passing of two of our long-standing members Joyce Hale and Pat Bunn.

Friendship Club details available from Alison Moore (01371 821632) or Sue King (01371 821411)

Felsted WI

Felsted WI is proud to be over 100 years old and would love to welcome new members. Our last meeting pre-lockdown was in March when Karen Odinga showed us how to make “Fabulous Fabric Brooches”. We usually meet the second Wednesday of every month (except August) at 7.45pm in the Memorial Hall. We enjoy a programme of speakers on a wide range of interesting topics, as well as occasional hands-on sessions. There are additional activities on offer such as Keep Fit, Outings and Book Club. Come along, try something different and make new friends.

For more information contact Penny Lewis on 07825 312829 / penny717@btinternet.com or Margaret Smith on 01371 822092.

Wool and Waffle

This is what has been knitted for Prem babies and Jhuggi jumpers. Many thanks to all of you who are busy knitting
If anyone wants more knitting ideas for using up scraps of wool please ring Kitty 01371 820444.



Felsted Holy Cross Church



LIFE|EXPLORED

Life Explored tells six original stories through short beautifully shot films that articulate and explore our inherent longing for more.

The films and Bible interaction then work together to provoke us to consider whether the things we're living for are bringing us what we want, or whether actually – and quite strikingly – they might be imprisoning us.

It's not just about sharing knowledge or learning new facts. The sessions persuasively encourage us to reflect together on how we are choosing to live our lives, and where we can find true happiness.

Live streaming via the Holy Cross Facebook page (www.facebook.com/holycrossfelsted/) every Sunday @ 8pm.

The United Reformed Church

The United Reformed Church and all related events are currently postponed because of the Corona virus, unfortunately, and will remain so until a directive from the government enables us to re-open. Under normal circumstances we hold a service every Sunday morning at 10.30am with a family service and holy communion once a month.

We also have lunches on special Sundays as well as social evenings. A luncheon club (Felsted Connections) is held on the first Thursday of each month at 12 until 2pm, which is open to all. A number of our ladies run the Women's Guild which meets every Monday afternoon at 2.30pm. The sessions run from January to June and then again from September to December. We have a variety of speakers, D.I.Y. afternoons, entertainment, afternoon tea and an annual lunch.

During these difficult times we are keeping in touch with our church family and friends via social media, letters and weekly phone calls.

The two church halls are available for hire for meetings etc. We pray that with God's help we will all keep safe and well. Should anyone need help during the current circumstances please call Diane Denny. 01376 583994. God bless. Diane

Felsted Memorial Hall



Hello everyone.

I am writing this on another glorious morning, haven't we had some lovely weather! I feel so lucky to be able to enjoy a lovely garden during these strange times. I often think about the families that live in high rise flats, it must be so difficult for them, particularly as the children are home from school. I think we all find it hard not seeing families at the moment. FaceTime is not quite the same as a hug from grandchildren is it?

Now, to news of the Memorial hall. I have had a couple of phone calls from people about the building rubbish outside the hall. Don't worry, it's not fly tipping! The builder was let down by a skip company, so had no choice but to put it outside. Peter is cracking on with the toilets, Dicky Howett has taken some photos of the progress. It is going to look so smart when it's done. You may also have noticed the bunting outside the hall to celebrate VE day, thank you Shirley, Nikki and Margaret for putting it up. We were planning a VE dance on Saturday the 9th, a joint venture between the British Legion and Memorial Hall. But sadly, as with so many other events, we have had to cancel it. But we will all celebrate this milestone event in our own way. I'm sure there are better times ahead and we'll be able to resume business as usual.



Well, I'll leave you all to your busy days, take care and stay safe.
We'll chat next month.

Hazel Fox



Felsted Parish Council

The Parish Council held their first online virtual Full Council meeting on 6 May, 2020 and were pleased to be joined by our 2 District Councillors and 2 members of the public. If you want to attend future virtual meetings of the Full Council or committees please contact Heather Read, Assistant Clerk (asstclerk@felsted-pc.gov.uk) to be given joining instructions. Normal meeting dates have been resumed.

Coronavirus measures update

The PC Office remains closed (although we are all working from home) as are all children's play areas and the public toilets. By the time you read this the playing field car park should be open again but we are asking everyone to maintain social distancing measures when they park and use the playing field.

The weekly Green Waste collection from Bannister Green is still suspended but it is hoped that this will resume in the next few weeks so please check the PC website for the latest information.

PC Helpline

The Helpline is still operational on 07936 070732, although the volume of requests for help has reduced in recent weeks. We are pleased to see that an informal neighbourly network has developed in the village but if you do need assistance at any time please do ring and we can arrange for deliveries of essential items, dog walking or just for you to have a chat with someone. Many thanks to the 60+ volunteers who have offered to help the more vulnerable in our village at this difficult time.

Vacancy for a local person to lock and unlock the car park and public toilets

The PC are looking for someone, ideally living in the centre of the village, to open and close the playing field car park and toilets every morning (8am) and evening (5-8pm depending on the time of year). The facilities are open 7 days a week but occasional cover can be provided for holidays etc. The PC also need someone to clean the public toilets 2 or 3 times a week. If you are interested in either of these roles (or combining the two) please contact the Clerk by 1 July 2020 for further details, including remuneration.

Diane Smith Clerk to Felsted Parish Council:

01371 823071 • clerk@felsted-pc.gov.uk • www.felsted-pc.gov.uk

Keep up to date with all the Council news – Visit the PC website and enter your email address to receive automatic notification by e-mail of all news articles as they are posted on the website.

Felsted Parish Council

Chairman's Chat

Three instances of fly tipping have taken place in Molehill Green. In times of trouble, we all like to think we are here to help each other, and doing so has seldom been as important as it is now. Helping your neighbour had perhaps lost its meaning over the past few years - barely a nod or a smile and not seeing them from one month to another - however I am sure in these strange and unusual times we are seeing a resurgence of community spirit.



While Coronavirus restrictions look set to continue for some time yet, let's remember that for some in our community life can be lonely at the best of times.

The Parish Council had its first online meeting at the beginning of May. A few minor hiccups but in general it went very well and business continues as usual. I am very pleased to announce the vacancy on the Council has now been filled, with Richard Silcock our local shopkeeper being co-opted onto it. We look forward to Richard joining us and bringing his vast wealth of local knowledge.

The fly-tipping incidents I reported on last month seem to have reduced with the opening of the local recycling centre. I noticed a visiting family parked in the lay-by at the end of the farm drive this week, following a very short walk followed by a picnic. They were about to drive off but had to wait as I approached on the tractor. Luckily I spotted what amounted to about half a carrier bag of rubbish thrown out of the window. Let's just say I suggested they take it home with them, the rubbish was picked up; and what a nice lady, she even waved to me out of the car window as they drove away!

Graham

Graham Harvey
Chairman Felsted Parish Council

New Surgery - One step closer

Uttlesford District Council's Planning Committee at its May meeting gave unanimous approval to an outline planning application for the housing development in Station Road on Bury Farm land that will also deliver a new doctors surgery and dispensary for Felsted.

The development forms part of the Felsted Neighbourhood Plan, which limits new development in the Parish over the next 15 years, will provide a modern purpose built surgery to be owned by the Felsted Community Trust.

The scheme was praised by Councillors for its innovation and local focus. The West Essex Clinical Commissioning Group also supported the application and said it hoped the development would now move forward as quickly as possible.



Details of the final design are yet to be approved but this is an example of how we might expect the new Felsted surgery to look.

For The Love Of Scrubs-Felsted Hub

A Lincolnshire nurse, Ashleigh Lindsell, identified a lack of 'scrub' clothing in her local hospital and created a Facebook group at the outset of the COVID 19 outbreak - 'For The Love Of Scrubs - Original Group', eventually accruing over 53,000 members.

Ashleigh directed a campaign raising money to buy material and generate volunteers to sew the scrubs. Patterns were made available online and sub-groups popped up nationwide spreading the spirit of volunteering to their local hospitals.

A large group in South Essex established a community sewing group, sharing information and creating a network of makers and keyworker deliveries. While awaiting the delivery of 'official fabric' for hospital scrubs, individuals appealed for donations of bedlinen from neighbours and started to create 'Duvet' items for their local healthcare workers.

Stringent lockdown measures meant Felsted crafters were unable to network with the South Essex group, so a local Facebook page was created and we appealed for fabric donations in Felsted, Dunmow, Flitch Green and Ford End to begin making 'scrub bags'.

Scrub bags are drawstring bags used to transport and wash used uniforms from work. The bags are opened and placed in the washing machine and washed at 60 degrees, without further handling by the health worker.

A local Broomfield therapist collected and delivered our bags to Broomfield Hospital for some weeks, until Broomfield became saturated with donations and our bags were redirected to the East of England Ambulance Service.

Eventually we were approached by GPs for scrubs. A local printer printed our pattern, and a very proficient Dunmow seamstress fulfilled local orders, also sewing 'official' scrubs with fabric donated by the original group.

Local volunteers expanded and continued to sew - 54 hats and 210 buttoned 'ear protector bands'. Buttons were donated



For The Love Of Scrubs-Felsted Hub

locally and the appeal for button sewers was enthusiastically fulfilled by locals. Hundreds were sewn.

The scrubs initiative is now slowing as many requirements have been met. We are still making scrubs and scrub bags, 14 and 167 respectively so far, but no further fabric donations are required.

So many have helped, and I would like to thank you all. I do not know everyone's name as some worked anonymously, so I will mention no names. Sewn contributions still arrive daily.

Every little Helped - Thank You



Felsted Places

CRIX GREEN



This small brick building has an interesting and turbulent history. When the common land of the Parish was enclosed in the early 19th century 1/4 acre was allotted to the Vicar, Churchwarden and Overseers of the Poor. The Lord of the Manor added another 1/4 acre.

A public subscription of £410 enabled the present small hall and cottage to be built in 1866. The life of the school, then established, was short lived. The building remained vacant and dilapidated until 1879. Then it was repaired with support, mainly from a non-conformist, Mrs Aaron Bentall. It was used for Christian worship by both the established church and non-conformists. There appears to have been an unhappy truce between them which boiled over in 1912 when the key used by the non-conformists was returned to the then Vicar of Felsted.

The resulting impasse continued until 1915 when, at the suggestion of the Headmaster of Felsted School, settlement was agreed for joint use with the non-conformists being responsible for the upkeep of the interior of the hall and the rent of the cottage aiding external works.

CRIX GREEN

In 1987 a letter had to be sent to The Charity Commission requesting their ruling on the ownership. The matter was finally resolved with the formation of 'The Crix Green Trust' with the aim of "Promoting the education (including social and physical training) of children and young persons in the Parish of Felsted in accordance with the doctrines of the Church of England." The Trust was to comprise of trustees from the parish council, the vicar of Felsted and members from Crix Green Mission. The fund supporting this Trust is generated from the rent of the Mission Cottage that was extensively renovated thanks to a loan from the Parish Council.

The trustees welcome requests for grants that accord with the aims. Crix Green Mission is still a place of worship with a weekly Sunday morning service open to all denominations. The Parish Council is funding an extension to provide additional kitchen and toilet facilities. The Mission hopes that the revamped building will once again become the centre of a community with a wide range of thriving activities. That is, of course, up to you the residents of Felsted.

Further information on the history, current services and the extension is available from brendawatkin@gmail.com



IS THERE A BUDDING ARTIST OR PHOTOGRAPHER IN YOUR HOME?




Categories are:

- Children aged up to 10 years
- Children aged 10 - 16 years
- Adults

Closing date is
July 10th 2020.

Winners will be
announced in August's
Felsted Focus and on
the Felsted Parish
Council
website.

Note: By submitting an entry, the contributor is agreeing that his/her picture can be used in future Felsted Focus publications.

A yellow paint palette with various colored spots (pink, purple, blue, green, yellow) and two paintbrushes with orange handles and brown bristles. The background is a green hill with white clouds.

In recent years, the Parish Council has been pleased to sponsor an art competition for the children of our village Primary School. However, with the school currently affected by lockdown and with so many people working from home we are making changes for 2020. The art competition and new photography competition, are open to everyone living in the Parish, including adults.

Entries should be a painting (in any medium) or a photograph of anywhere within the Parish. It can be a scenic view, a building of architectural merit, a wildlife subject or anything unusual or interesting.

The winning children's entry for each competition in each category will receive a £40 gift card for Hobbycraft, be featured in Felsted Focus and on the Parish Council website. Winning adult entries will feature in Felsted Focus and on the Parish Council website. Layout can be either landscape or portrait (portrait is more suited to a 'whole page' feature in Focus but landscape is acceptable).

Any child or adult can enter both the painting and photographic competition but only one submission is allowed per individual in each category.

Please include with your submission, your name, age (children only) and the location within the Parish of the subject matter.

For ease of submission at this unusual time, a digital photograph of your painting should be submitted.

Please send your entries to... felstededitor@gmail.com

War reminiscences

Two of Felsted's oldest residents, Fred and Wyn Perry, were 10 and 11 years old when WWII was declared. Wyn, now 91, remembers the war as being rather exciting, as she didn't realise the full impact it was having further afield.

She says: "We lived in the old houses at Chaffix. With our neighbours we built a shelter at the bottom of the garden. I would carry my little brother Gerald into it when there was an air raid."

One of seven children, she recalls her older brother being sent to Italy and Africa, and her mother worrying; but to her, soldiers living at Felsted School was a novelty.

Fred grew up in Little Dunmow and attended Arborfield Army Apprentice College aged 15 when war ended. After he and Wyn married in 1951 they lived in Surrey, however when he was stationed in Korea, Wyn returned to Felsted. She was joined by Fred when he was demobbed in 1955 and they have lived in Ravens Crescent, Watch House Green for more than 60 years.

Well known in the village, they have been actively involved in the gardening club, British Legion and WI. Their five children, who all live nearby, have been helping out with shopping during lockdown, with neighbours filling in between times.

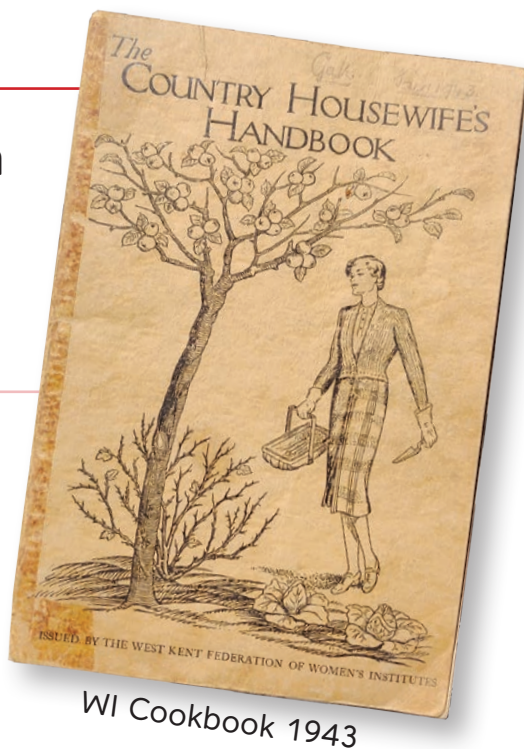


Recipe

A recipe from The Country Housewife's Handbook.

INGREDIENTS

1pt young gooseberries
Sugar
1oz butter
4 eggs
Breadcrumbs



WI Cookbook 1943

- Boil gooseberries with sugar to taste.
- To the well-beaten eggs, add 1oz butter and when fruit is cold mix together.
- Butter a mould and mix together fine breadcrumbs and sugar.
- Line the mould thoroughly.
- Pour in fruit gently so as not to break the crust of crumbs.
- Strew more crumbs thickly over the top (1/2 inch thick).
- Bake 1 hour.
- Cover with a cloth when taken from the oven.
- Unmould when cold.

75

Felsted

VE DAY

1945 - 2020



75

VE DAY

8 19



MAY

1945 - 2020





Calling all rainbow and bear seekers

A colourful and cuddly Felsted trail



Felsted School Supports the Elderly



Schools across the country may be closed, but this hasn't stopped staff and students at Felsted School from joining the fightback against the pandemic. Not only have they housed the East England Ambulance staff, made visors and donated PPE and Easter eggs to the NHS, but they are also brightening up the lockdown for a number of elderly residents in the village.

The Felsted Almshouses were left by the School founder, Richard Lord Riche, for those in need in the village. Managed by Felsted School as part of his legacy, seven Almshouse residents are being particularly nurtured by the School during this period of lockdown. Not only have they been contacted regularly by the School to ensure they are safe and well, but Lou Wilks, the School's Function Manager, has been going the extra mile to do regular shopping for some of them. She has also coordinated with Felsted's Catering Manager, René Hauret, for the residents to all be given a special Felsted hamper of food and drink every few weeks to lift their spirits. These have been personalised to include some of their favourite items, such as elderflower cordial and packets of jaffa cakes! The School Chaplain, Nigel Little, has also been lending a hand, mowing their communal front lawn in time for the VE celebrations.

Edna Cooper, age 88 and a retired employee of Felsted School, has lived in one of the Almshouses for 12 years and has been really grateful for the School's support and Lou's care in particular. Marina Davies, age 77, and another Felsted School former employee of twenty years, says that Lou's visits and donations "are much appreciated and really make such a difference to their week." Alan Dixon, aged 70, another resident of ten years confirms; "the School looks after us really well, supporting us and bringing us these lovely hampers filled with delicious items".

Felsted School Supports the Elderly

It was a particularly poignant day last Friday for one resident in particular, Florence Manley, aged 103 years. She was evacuated during the war years with her young family from Southend to Aylesbury in Buckinghamshire. She reminisces; 'it was a tough seven years living in digs away from home, but I was lucky that my husband was not sent away. His skills were needed as an advisor for scientific instruments.' It was a quiet day of individual celebration for Florence, who was unable to see her children, but she did enjoy hearing the tunes of a solo bagpiper who serenaded them on his way around the village, as she enjoyed looking out on the newly mowed communal lawn, adorned with union jacks in the beautiful sunshine.

Lou Wilks comments; "It is really important that we look out for those more vulnerable in our community at this time and I really enjoy doing what I can to help. The School has been really generous in giving a bit extra to these residents during the lockdown to brighten their day."



DISTRICT COUNCILLORS' CORNER

We have been your District Councillors for just over a year now and what a privilege it has been. This is a challenging time for all of us, and we do appreciate that is the case for some of us more than others. But, what we do believe is that we are so very lucky and grateful to represent such a beautiful village and area. We would like to say thank you to the Parish Council for organising and all the volunteers that have come forward to help their Felsted neighbours who are self-isolating, with shopping, collecting prescriptions or some other need. It shows a community spirit that is obvious here and apparent all over the District.

One of the main issues raised during the election campaign last year was that of building of additional properties and the Local Plan which included part of the "West of Braintree Garden Community". We are very pleased to say that on April 30th at an Extraordinary Full Council Meeting held virtually, a cross-party majority voted to withdraw the Local Plan. John, in his role as cabinet member for Planning, proposed the withdrawal of the plan and Sandi spoke in support of the withdrawal. If you are interested in finding out more the following link will be useful. www.uttlesford.moderngov.co.uk/ieListDocuments.aspx?CId=159&MId=5554

So, we start again, aiming to have a plan in place by the government deadline of the end of 2023. This is in the early stages, there is however, a commitment to have wide and effective consultation districtwide upon the new policies and new proposals to be considered.

Despite Coronavirus, UDC staff have worked hard to keep all the services that we rely on going. Most staff work from home now with only about 20 people going into the offices in Saffron Walden. All other work is carried out remotely and normal council routine and committee meetings are held via ZOOM. Sandi has chaired Planning Committees virtually and will continue to do so twice a month for the foreseeable future.

Council Tax and Benefits - We understand that some residents may be facing or experiencing financial challenges at this time. There is support available to residents. www.uttlesford.gov.uk/counciltaxandbenefits

Support for Business - There are a number of businesses spread across the district that are eligible to receive a support grant which have not yet registered. Businesses are urged to check the

DISTRICT COUNCILLORS' CORNER

eligibility criteria and to register for the grant funding if they have not done so already. This is not a loan and does not need to be paid back. Details of the grants and the governing criteria can be found at www.uttlesford.gov.uk/covid19-business-grants-fund.

The online application form is available at:

www.uttlesford.gov.uk/business-grant-fund-application-form

Bounce Back Loan Scheme – This is a new scheme designed to enable businesses to access finance more quickly during the coronavirus outbreak:

www.uttlesford.gov.uk/article/6686/Bounce-Back-Loan-Scheme-BBLS-

There is lots more information on help, guidance or information from UDC relating to anything that maybe related to COVID-19 so please go to the following link: www.uttlesford.gov.uk/coronavirus or call 01799 510510

See also on social media:

facebook/UttlesfordDC twitter@UttlesfordDC Instagram uttlesforddc

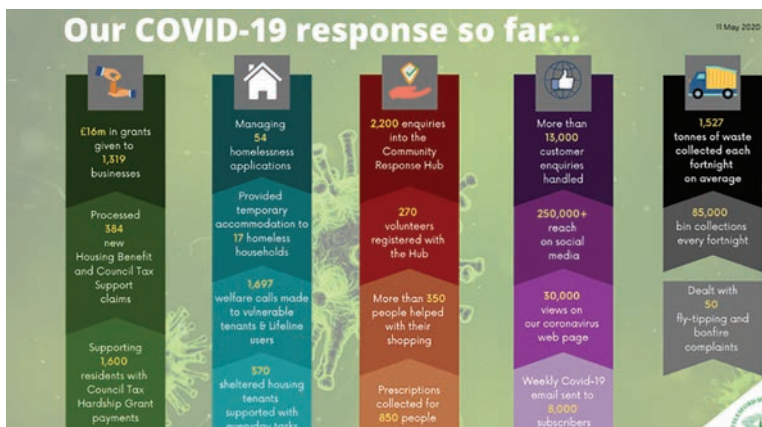
We are always available via email or phone should you have questions or if we can be of help, and will always be very happy to meet anyone at our councillor surgeries as soon as they can be reinstated.

Stay safe, stay healthy.

Sandi Merifield
cllrmerifield@uttlesford.gov.uk

John Evans
cllrevans@uttlesford.gov.uk

Tel: 07958 389059



Uttlesford Citizens Advice

Listening Line

For a friendly ear or a regular chat
whether you are feeling worried,
overwhelmed or you just want to vent!

Call **01799 618841**
or email **chat@uttlesfordcab.cabnet.org.uk**



**citizens
advice**

Uttlesford

**We're here for everyone to
support you through the
Coronavirus Pandemic**

PUZZLE PAGE

Word Search

Felsted 2

O	H	S	R	U	C	R	I	X	C	S	Y	G	R
S	C	R	M	S	S	N	P	Y	E	S	Y	R	E
C	T	O	O	W	W	I	E	N	A	E	G	A	E
M	A	I	L	O	A	N	B	N	S	T	Y	N	R
O	W	R	E	L	N	S	T	R	S	O	N	S	E
M	O	P	H	L	L	E	E	H	R	O	H	M	M
M	I	R	I	I	A	L	E	H	I	B	H	O	L
S	M	L	L	W	B	R	S	L	C	S	H	R	E
H	E	E	L	B	I	B	U	L	B	N	T	E	H
N	H	O	O	C	W	E	O	E	R	I	E	L	C
O	C	C	H	H	N	B	H	G	W	T	E	R	Y
R	M	C	C	R	O	M	W	E	L	L	L	L	F
A	C	R	S	H	S	W	Z	O	L	E	E	Z	R
B	H	O	L	L	I	N	S	E	L	L	S	P	C

HOUSE
PYES
CRUX
CROMWELL
COBBLERS
THISTLY
MILL
WILLOWS
FRENCHES
LINSSELLS

LEEZ
CHELMER
BOOTE
PRIORS
WATCH
BARON
GRANSMORE
RICH
MOLEHILL
SWAN

Felsted's Spectacular Trees

The Copper Beech spreads its canopy in the Churchyard with a circumference of 3.2m. National Parks age guide indicates an age of approximately 128 years.



Felsted's Spectacular Trees

The oak on Jollyboys Lane Byway has a circumference of 4.31m, using the same guide indicating an age of 215 years.



Gardening Tips



Gardening in very dry conditions

Here are some tips for keeping our gardens more drought resistant at this time:

- Remove weeds regularly to avoid them taking up water that your plants need
- Soak new plants in their pots in a bucket of water till bubbles rise to the surface before planting
- Water in all new plants and keep watering them including shrubs that you put in earlier in the year
- Mulch around new plants with compost, gravel or straw covered with gravel.

Coping with dryness is a key part of gardening in the East of England so consider what to plan for next year - gravel garden, mediterranean plants and so on.

I have foxes digging up one of my beds at present!
Tips to handle that another time!!



LOCAL FOOD DIRECTORY

In these changing times the opening hours and services may change.
Please check using the websites, Facebook pages or telephone numbers.



LINSELLS GENERAL STORE AND POST OFFICE
The Post Office is open: Tuesday & Thursday 1 - 5
Pop up Post Office in Legion (card payment only):
Mon, Wed & Fri 12-4
Shop opening times: Mon, Wed, Fri 10-7 Tue,
Thu, Sat 7-7 Sun 9-4
If you are vulnerable call 01371 820255 to place
and pay for an order. Delivery can be organised.



COOP STORE FLITCH GREEN
Store open 8am-8pm every day. If you are
vulnerable you may phone in an order.
Payment on collection.
Call 01371 820385



FLITCH & CHIPS
Quality traditional fish and chips. Operating
temporarily, from Flitch Green Community Hall Car
Park on Friday 4:30 – 8:30pm & Saturdays 4:30 – 8pm
 Flitch & Chips – mobile fish & chip van



THE SWAN INN
Temporarily opening as an 'indoor market'
Friday through Sunday, 10am to 4pm.
Pre-order is available by emailing us.
info@the-swan-inn.co.uk, 01371 820003
www.the-swan-inn.co.uk

LOCAL FOOD DIRECTORY



TIM ALLEN'S FLITCH OF BACON

Take away available for collection: Comfort food, special evening meals and Sunday roast.

For details of opening times and menu please go to our website.

01371 821660 to pre-order. www.flitchofbacon.co.uk/take-away/



TROTT & WHINNY

Gourmet burgers made from high quality local produce. Weds, Thurs & Sat 5 – 8pm Fri 5 – 9pm Collect from Tanton Road Flitch Green.

www.trottandwhinny.com 07548 366435

Delivery Available



SPARLINGS FARM

A free range poultry farm selling eggs from our self-serve shop. We operate with a cash only honesty box and change isn't always available. Our eggs are £2.50 per dozen or £6.25 for a tray of 30. www.sparlingsfarm.co.uk or call 07715 889439



RAZZA

Razza serves delicious Asian, Indian, and Bangladeshi dishes to Felsted, CM6, and the surrounding areas. Conveniently located for collections we also deliver.

www.razzafelsted.co.uk 01371 821414



GEORGIE'S FOOD

We are making old fashioned yummy food, to fill tummies and sooth the soul. For a full menu please visit our web page or call on the number listed.

 Georgie's Food Delivery. 07504 136995

The magazine takes no responsibility for the quality or service.

LOCAL SERVICES DIRECTORY

BUSES

133 Network Colchester: 01206 877620
16 Stephenson: 01376 503050
other transport enquiries:
Traveline: 0871 200 22 33 or
www.travelinesoutheast.org.uk

CITIZENS ADVICE BUREAU

Braintree: 01376 324129
Great Dunmow: 01799 618840

COUNCILS

Essex County Councillor:
Simon Walsh 01371 810451
Uttlesford District Council: 01799 510510
District Councillors: - Sandi Merifield
cllrmerifield@uttlesford.gov.uk
John Evans cllrevans@uttlesford.gov.uk

Felsted Parish Council

Chairman: Graham Harvey
Clerk: Diane Smith

Parish Office: United Reformed Church Hall,
Stebbing Road, CM6 3JD
Office Tel: 01371 823071

Office hours: Mondays: 10:00 - 12:30
and Wednesdays: 16:00 - 18:30
email: clerk@felsted-pc.gov.uk
www.felsted-pc.gov.uk

DOCTORS

Dr's Pitt, Tee & Stevens
The Surgery, Braintree Rd.
Tel: 01371 820410
Out of hours: 01371 872121

ELECTRICITY

and network emergencies:
Tel: 0800 7838838, 0800 0280247
and 08701963090 (daytime)

GAS

National Grid & Emergencies
Tel: 0800 111999

HOSPITALS

Broomfield including Casualty
Tel: 01245 362000

MEMBER OF PARLIAMENT

Kemi Badenoch
kemi.badenoch.mp@parliament.uk

MEMORIAL HALL

Lettings - Sheila Kill
Tel: 07926 377343
felstedmemhall@gmail.com

POLICE for our parishes

Essex Police Main Telephone Numbers:
Emergencies: 999
Non-Emergency Tel: 101

POST OFFICE

Felsted
Tel: 01371 820251
www.postoffice.co.uk/branch-finder

SCHOOLS

Felsted School:
Tel: 01371 822600
Felsted Preparatory School:
Tel: 01371 822610
Felsted Primary School:
Tel: 01371 820215
Flitch Green Academy:
Tel: 01371 822330
Ford End C of E Primary School:
Tel: 01245 237209
Email: admin@fordend.essex.sch.uk
Website: www.fordendschool.com
Helena Romanes School:
Tel: 01371 872560
Whipper-snappers Daycare Nursery
and Kids Club
Tel: 01371 821131

SEWERAGE

Anglian Water - sewerage
(not water, see below) Tel: 03457 145 145

WATER

Affinity sewerage
Supply problems and emergencies
Tel: 0345 3572407

TRADE DIRECTORY

ACER TREE SURGERY

Dunmow company.
Fully insured and NPTC assessed.
Email: acertreesurgery@gmail.com
Tel: 01799 598084 • Mob: 07958 184196

BEAUTY & HOLISTIC TREATMENTS

The Retreat, Dunmow
01371 878989
www.theretreatdunmow.co.uk

BED & BREAKFAST

at Argyll House.
5 star en-suite accommodation
Station Road, Felsted.
Tel: Paul & Caroline, 01371 821559.

BINGS HALL

We are a small, friendly, family orientated care home in Felsted available for either respite or permanent care.
Contact Carla – Manager on 01371 820544
Mobile 07889 840274 or pop in to Bings and have a tour and a chat.

CHIMNEY SWEEP SERVICES

“RODTECH” power sweeping open fires, log/multi burners oil/solid fuel ranges etc. Clean, prompt and professional, insured, bird guards fitted & chimney repairs.
Tel: Tony mob: 07935963837
or 01279 494446

CLEAR SIGHT DRONES

Aerial photography. Have your property photographed by professional drone pilot. Services also include roof surveys, boundary line identification.
Tel. Clive 01371 820330 / 07979 054654
www.clearsightdrones.com

ELECTRICIAN.

BEEHIVE ELECTRICAL LTD.

All types of electrical work undertaken.
Tel: Neil on 07989 499983

FAMILY FUNERAL DIRECTORS

Daniel Robinson & Sons Ltd. 24 hr personal service. Pre-payment funeral plans.
Haslers Lane, Gt. Dunmow.
Tel: 01371 874518

FELSTED PROPERTY MAINTENANCE

Property maintenance and improvements.
Free estimates given.
Tel: Clive Perrins 01371 820330
mob: 07979 054654
www.felstedpropertymaintenance.co.uk

FOOT HEALTH Practitioner

& Retired NHS Nurse. Penny James.
Foot Health Care, Foot Spa Therapies & Reflexology at Wethersfield Clinic.
Home visits available for the housebound for routine foot health needs.
e: penny@feetwise-pj.co.uk
Tel: 07947364551

GENERAL GEEK

IT Support in Your Home! Virus removal, laptop and desktop repairs.
Tablet and Mobile Phone Repairs, support and training.
Office: Tel: 0800 1337514 or
Engineer: mob: 07701065253

WJH GRAB HIRE LTD

For muck away, grab away and delivery of all types of aggregates for commercial and domestic use.
Tel: 01371 238621 or 07758 160366

KARATE AND KICKBOXING CLASSES,

Felsted Memorial Hall,
Thursdays from 5.30 pm.
Please see www.themartialartscentre.com

LAWN MOWER & GARDEN MACHINERY SALES, SERVICE & PARTS

Priory Lodge, Felsted.
Tel: 01371 820695

TRADE DIRECTORY

P. JUDGE CONSTRUCTION SERVICES

Brickwork, Repointing, Restoration
and Hard Landscaping

Based in Bannister Green

Tel: 01371 499730/ 07734 862839

www.judgeconstruction.co.uk

email: info@judgeconstruction.co.uk

PHYSIO IN FELSTED

Experienced local Chartered Physiotherapist
offering Ultrasound, Acupuncture,
Manual Therapy, Exercise Therapy
and Integrated Myofascial Release.

Tel: 01371 821063 • mob: 07958339574.

email physioinfelsted.co.uk

REFLEXOLOGIST

Fiona Agar MAR.

Fully qualified, Member of Association
of Reflexologists.

Based in centre of Felsted village.

Tel: 01371 820330 • mob: 07977 546093

ROOFING SERVICES R WHEELER

Slating, Tiling, Flat Roofs, Guttering,
Repairs, Chimney work, Local, Reliable,
Free Estimates.

email: rwheelerroofing@gmail.com

01371 811308 • mob: 07951 349837

SPELLBROOK DRIVEWAYS and LANDSCAPES.

Driveways, Patios and all landscapes.

Fully insured and guaranteed.

Tel: 01279 503936. Website:

www.spellbrookdriveways.co.uk

email: spellbrookdriveways@gmail.com

TUTORING IN MATHS & SCIENCE

Most subjects offered to A level by
current examiner. Contact Dick Frost,

Tel: 01371 820824 • mob: 07909 526713

email: richard.j.frost@btinternet.com

WAGGY TAILS GROOMING

A caring and professional dog groomer
in Felsted (Hollow Road)

Contact Katia on 07738 595466

JD WALLIS BESPOKE JOINERY

Jon Wallis over 35yrs of experience

m: 07725 654121 t: 01371 821457

e: jonwallis73@gmail.com

w: www.jonwallisjoinery.com

WALDEN CHIMNEY SWEEPS

Clean, efficient, professional sweeping.

Guild of Master Sweeps Sweeping Certificates
issued. All appliances swept including wood
burners, open fires, Rayburn, Aga's etc.

Tel: Paddy 07956 099788 or 01799 599981

WINDOW CLEANER

with 20 years local experience.

Tel: Eddie Driscoll mob: 07941 776705 or
01245 360540

The closing date for
content for June's
magazine is the
12th June.

Please help
support us by
sending articles
and pictures

felstededitor@gmail.com

TAILORED HOME INSURANCE RIGHT DOWN TO THE FINEST DETAIL

A home is more than just bricks and mortar. That's why NFU Mutual Bespoke home insurance covers not only your home but also your beloved garden.

To discuss your high value home insurance,
call Chelmsford agency on 01245 421383
or search NFU Mutual Bespoke



NFU Mutual
BESPOKE INSURANCE

Our Agents are appointed representatives of The National Farmers Union Mutual Insurance Society Limited (No. 111982). Registered in England. Registered Office: Tiddington Road, Stratford upon Avon, Warwickshire, CV37 7BJ. Authorised by the Prudential Regulation Authority and regulated by the Financial Conduct Authority and the Prudential Regulation Authority. A member of the Association of British Insurers.
D-53D65BC5