

FELSTED

FOCUS

COMMUNITY MAGAZINE

AUTUMN 2023

ISSUE 20

A FREE complimentary magazine or £1 where purchased

QUARTERLY



INCLUDED IN THIS ISSUE

- FEATURES
- MEET THE TEAM
- PUZZLE
- RECIPE





Helping you live independently with a balance of privacy and support in Felsted.

Choose a spacious room with en-suite facilities and relax with home cooked meals included

Abbeyfield House



Please call 01376 320061 to find out more
marketing@abbeyfieldatbraintree.co.uk
www.abbeyfieldatbraintree.co.uk

Note from the Editor

In this issue we aim to bring you up to date with some important developments in our parish over the summer and to tell you about the further changes and challenges we face over the next few months.

Some changes are obvious, like the re-opening of the Swan Inn as a pub, restaurant, and pizzeria. A planning application has also been made for the Boote House to open as a restaurant and to add a shop. We should send our thanks to Richard and all the staff who have worked extremely hard to refit Linsells and for their continuing support of the residents of Felsted parish. It is great to see life coming back to the centre of the village!

Mulberry Homes, has at last broken ground on our new Felsted Community Health Centre in Station Road. When complete, the John Tasker House practice has confirmed it will move to the new premises. Having a new modern surgery and dispensary in the parish is wonderful news for all of us but specially for our elderly residents.

Janice

Editorial Team:

Janice Ratcliffe
felstededitor@gmail.com
Sarah Gale
Janet Johnston
Hope Alexander
Richard Freeman
Roy Ramm

Graphic design and layout:

David Hardy
Astragraphic Design
info@astragraphic.co.uk

Print:

Paul Clark Printing

Parish Council:

01371 823071
www.felsted-pc.gov.uk



Cover painting by: David Hardy

Felsted Friendship Club

In April, a month of sunshine and showers, we held a meeting and had a fish and chip lunch followed by the AGM. After the adoption of the Accounts, Evelyn Woodley our President took the Chair and the whole Committee was voted in again. Alison Moore (Chairman), Sue King (Vice-Chairman), Carole Smith (Treasurer), Margaret Howett (Secretary), Joyce White (Programme Secretary), Diane Denny (Catering), Marian Martin, Rita Staines, Barbara Burnham and Christine Robinson.

After our meal, we had a delightful speaker, Siobhan Pierce, who is a speaker, writer and presenter. She gave us a light-hearted talk of how she became a clown called Dolly Daydream, which began when she dressed up and entertained at her twin boys' birthday party. Later on she gave us some stories of when she became a Chief Housing Officer for a local council.

During the merry month of May, we celebrated the coronation of King Charles III, with a delicious tea supplied by the Hub. Dressed in crowns, members drank a toast to our new King, sang the National Anthem and were then entertained with music supplied by Graham Kemp. We sang and danced and, at the end of the afternoon, sang Land of Hope and Glory, waving our flags. A good time was had by all.

In June, Frances Harper gave us a fascinating talk on the Silk Road from China to Essex. In Braintree and Sudbury, the history of silk making is famous. The silk makers in Sudbury make silk for many royal residences, for the King (and for his crown).



Felsted Friendship Club

At our July meeting, Tony Britten, a Trustee of Hope House Community, talked about the two houses they have for eight people in Braintree. The charity helps local people, proactively helping them from becoming homeless. They also liaise with other organisations such as the Salvation Army and Braintree Council and try to find jobs for their residents, to help them along the way to becoming self-sufficient.

Future Meetings in 2023

- 15 Sept – Dave Johns – vocals and comedy
- 20 Oct – Treasure beneath your feet – Gordon Bailey
- 4 Nov – Christmas Coffee Morning, Memorial Hall at 10.30 am.

If you are interested in coming along to any of our meetings, please do contact either Alison Moore (821632) or Sue King (821411).

Largely through a generous contribution from the parish council and by selling advertising space we have just about been able to deliver our magazine to over 1100 homes in the parish four times a year free of charge. We've asked before for a small contribution but only a handful - a baby-sized handful - make regular donations. So far this year, we've received just £35!

You often tell us how much you enjoy the FOCUS and we have some wonderful volunteers who give their time to write, photograph, layout, proof and even deliver for us but, unless we can generate more income, we may not be able to continue.

So, please help us to continue your magazine and contribute what you can, even just £5 per year per household would help to keep us going. Every penny will be spent on printing and delivery.

Please send your contribution to the Parish Clerk, URC Hall, Stebbing Road, Felsted, CM6 3JD or you can make a direct contribution to the Parish's bank account at the address below.

Barclays Bank

Sort code: 20-97-40

Acc No: 00393274

Please mark your contribution **'FOCUS'**



Felsted WI

The summer of 2023 has been very mixed weather-wise. The early summer saw our very beautiful flower tubs throughout the village - courtesy of the WI, friends and helpers - giving such wonderful colour to the roads and passersby.

In July, we had a lovely evening boat trip from Paper Mill Lock, with food and drink provided. We enjoyed a lazy cruise down the river, watching with fascination the process of going through the lock gates.

Then in August we held a summer garden party, with our members enjoying home-made food and fruit punch, casual conversation and a chance to relax and talk on a beautiful summer evening.

There is plenty more in store for the rest of the year and we always welcome new members and visitors.

Meetings are on the second Wednesday of each month at 7.45pm in the Memorial Hall.



For more information,
please contact
Penny on 07825 312829
or Margaret on
01371 822092.

Felsted Memorial Hall

Hello everyone!

I hope you have all had a good summer, despite the erratic weather. I expect everyone is back to school and work now. Where has the summer gone?

It's been business as usual for the Memorial Hall. Although some groups take a break through July and August, a summer children's drama group takes place during the school holidays. The hall was closed for a week at the end of July so that the main floor could be sanded and sealed. The work was completed within the time allotted and it looks beautiful.

Sadly, there has been the usual mindless vandalism in the play park and pavilion. In addition, the cladding at the back of the hall has been smashed. Not only that, but the entrance barrier has also been wrenched off, damaging it, and the padlock taken. Now it took some force to do that. These are not small children up to mischief. Some one knows who these vandals are. The questions we are all asking ourselves are, why? What do they get out of it?

On a lighter note, the flower troughs outside the hall look lovely. Thanks to Becky and Shirley for keeping them watered. Bookings are steadily coming in for parties and celebrations, and, of course, Panto rehearsals start in the Autumn.

Don't forget, we need more committee members. If you are interested, please get in touch.

Until our winter chat, take care.
Hazel Fox





Services

9AM: 2ND, 4TH & 5TH SUNDAYS

11AM: EVERY SUNDAY
WITH YOUNG PEOPLE GROUPS

www.felstedchurch.org.uk

United Reformed Church

Dear Friends,

The time goes by so quickly and we are now approaching the beautiful season of autumn, unfortunately, to be quickly followed by winter when some of us find it a bit more difficult to get out and about. We at the URC would like you all to know that whenever anyone needs any support we will try, wherever possible, to help if we can.

Recently we held a service at the Crix Green Mission, which was very well attended, and also a Coffee Morning at the URC. Together with a few private donations we raised the grand total of £463.50 which has been donated to Hope House (the shelter for the homeless in Braintree.)

Unfortunately, we have had to cancel our mid-week meetings at the Church for the foreseeable future, but as soon as we are able we will reinstate these and of course will let you all know.

The service will be followed by lunch which will be £10.00 per person. If you would like to join us, please just let us know.

On October 13 we will be holding our Church Social, where we will be running an auction of any unwanted items. The proceeds made on that day will be given to our chosen charity this year – Little Haven's Hospice. The event will run from 2.00pm onwards. We look forward to seeing you all.

Please contact Diane on 01376 583994 with any queries.
Any queries please contact Diane 01376 583994.



Meet the Team



DAVID HARDY **'FOCUS' Graphic Designer and Artist**

David Hardy is our graphic designer and has also produced the spectacular cover for our autumn edition.

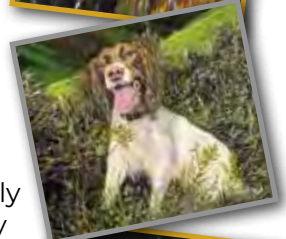
A lifelong Felsted resident and third generation Felsted Primary School pupil, with a flair for art and design, Dave has been a professional graphic designer for most of his working life.

Outside of his daily design work Dave said, "I managed to find the odd moment at home for watercolours but spent most of my free time designing and painting stage scenery for local amateur musical theatre groups."

His work has been recognised by NODA, (National Operatic Dramatic Association) and has won awards for technical and set design.

Now in retirement, Dave still involves himself in set design but now has also found time to concentrate on smaller artistic projects. "I mainly work with acrylics and oils and very much enjoy the use of colour these mediums can bring," he explains. "I see my style as more akin to impressionism and abstract although I do take on work painting animals and family pets, where I try my utmost to bring out the animal's soul."

Dave has generously given his time to laying out the content of the Felsted Focus since our very first issue and our autumn front cover is a lovely example of his artistic talent.



The Gardens of Easton Lodge

Last September the dahlias were stunning, if rather stunted due to the summer drought, and the cosmos, sunflowers and roses brought colour to other borders. This year they should all be gorgeous, following the showers we have had since June. And with these splashes of colour and the ripening squashes, pumpkins, apples and pears our excitement is building for our Apple & Bees Day on 17 September.

The Apple & Bees Day is usually great fun with a host of activities for visitors. The day will tickle the taste buds. There will be apple pressing and the opportunity to take juice home; fresh apples; orchard produce; a range of honeys; and apple and honey cakes. Our tombola of jams and jellies made from our soft fruits is hugely popular. Visitors will also be able to buy cider made from our apples; honey and beeswax items; our garden produce; crafts; and plants. There will be apple and honey craft activities for children and a related trail. Our volunteers and visiting exhibitors love the day and the opportunity to chat with young and old alike about the joys of orchards, fruit and the benefits fruit trees provide for local wildlife.

This year we will be joined for the first time by Take Note, a concert band based in Felsted. They have a huge range of instrumentalists and hence a wide repertoire, so it will be exciting to hear what they play at the Gardens! Tickets will be available in advance through Trybooking or on the gate. The gate opens at 11.00am and last entry is 4.00pm. The Trust's volunteers will provide refreshments: bacon, cheese and hummus rolls and homemade cakes.

For more information go to www.eastonlodge.co.uk/whats-on
Jill Goldsmith



THE GARDENS OF
EASTON LODGE

Recipe: Picalilli

Making piccalilli is a harvest-time tradition using excess vegetables from the garden.

I have wonderful childhood memories of chopping vegetables, the astringent smell of hot vinegar and enjoying homemade piccalilli at Christmas.

You can use whatever vegetables come to hand, but I always include onions and an abundance of cauliflower (it's our favourite). Use stainless steel pans and spoons and old clothes for the sauce making as turmeric will stain plastic utensils and clothing. Make sure your jars are meticulously clean, and remove all labels.

Makes 3 x 340g jars

GF=Gluten Free

1kg washed, peeled vegetables – select from the following:
cauliflower, green beans, cucumbers, courgettes/marrow, green
or yellow tomatoes, small (pickling) onions or shallots, peppers
2 tbsp fine salt
30g cornflour **(GF)**
1 tsp ground turmeric
2 tsp English mustard powder
½ tsp ground ginger
600ml cider vinegar **(GF)** or malt vinegar (contains gluten)
175g granulated sugar

Method:

Cut the vegetables into small, even bite-sized pieces. Place in a large bowl and sprinkle with the salt. Mix well, cover the bowl with a tea towel and leave in a cool place for 24 hours, then rinse the veg with cold water and drain thoroughly.

Blend the cornflour, turmeric, mustard powder and ginger to a smooth paste with a little of the vinegar. Put the rest of the vinegar into a saucepan with the sugar and bring to the boil.

Pour a little of the hot vinegar over the blended spice paste, stir well and return to the pan. Bring gently to the boil. Boil for 3–4 minutes to allow the spices to release their flavours into the thickening sauce.

Remove the pan from the heat and carefully fold the well-drained vegetables into the hot, spicy sauce, bring the pan back up to just boiling. (To scald the vegetables).

Pack the pickle into warm, sterilised jars and seal immediately with vinegar-proof lids. Leave for 4–6 weeks before opening. Use within a year.





Felsted Parish Council

Public Meeting with Affinity Water Friday 13 October 23

The middle of June saw severe interruptions to the water supply in Felsted. This has been a recurrent problem for many years. Despite previous assurances from the water company, things have not improved. Following the latest issues the Parish Council contacted Affinity Water requesting that they attend a public meeting to hear the concerns of residents. The meeting has been arranged for Friday 13 October commencing at 4.30pm in the URC Hall in Stebbing Road. Kemi Badenoch MP will also be in attendance. Affected residents are encouraged to attend.

Salt Bag Partnership Scheme for Winter 2023/24

To support the local community to help themselves during periods of heavy snow Essex County Council has made available free of charge one tonne of salt for use by the community on the local highway.

Once delivered the salt will be used to keep the salt bins located around the parish topped up throughout the winter months.

Local volunteers are needed to spread this salt onto the paths / highways on an 'as needed' basis. If you are able to spread just a little, or a lot, your help would be greatly appreciated. If you may be able to help and wish to go onto a list of volunteers please get in touch with the Clerk to the Parish Council.

Heather Read
Clerk to the Parish Council
clerk@felsted-pc.gov.uk
07719 552174

Keep up to date with all the council news – Visit the PC website and enter your email address to receive automatic notification by email of all news articles as they are posted on the website.



Help Plan Felsted's Future

We know that sometimes it seems as though Felsted has become one big building site. The truth is that much of the development around us is outside the parish boundary or had already received approval before our Neighbourhood Plan was formally 'Made'. We have, in fact, been tremendously successful in preventing unwanted development within the parish of Felsted by having our Neighbourhood Plan.

In February 2020, following five years of hard work by the Steering Group, Felsted had its Neighbourhood Plan approved by Uttlesford District Council. In addition to preventing the proliferation of unwanted development, the plan secured a new Community Health Centre (to be owned by the Felsted Community Trust), currently being developed by Mulberry Homes in Station Road. Coming soon is a much-needed, safe and secure car park for our primary school.

After three years of this plan, the advice is that we should refresh it to strengthen and secure further protection for our parish. Neighbourhood Plans that are older than 2 years carry reduced weight during planning considerations especially where the Local Planning Authority do not have an 'up to date' Local Plan or the required 5-Year Housing Land Supply which is the case for Uttlesford District Council.

No planning or other professional qualifications are required to become part of the Felsted Neighbourhood Plan Steering Group to shape the new plan. We just want Felsted folk who can give a little time to help us refresh the plan.

If you would be interested in joining the group, please contact the Parish Clerk.

Phone: 07719 552174

Email: clerk@felsted-pc.gov.uk

What's going on in Felsted

The Boote House

Plans are moving forward to sympathetically redevelop one of the oldest and most important buildings in Felsted. If approved, the Grade II* Boote House would once again become a restaurant. It would also include a shop – as yet we don't know what kind of shop – and an office. The plans also include three apartments on the first floor.

Historically, the Boote has housed multiple businesses and if the fabric of the beautiful old building is to survive, it must be allowed a new and sustainable purpose.

The parish council recognises that bringing both these businesses back to life will also bring back increased pressure on parking in the centre of the village and difficult choices have to be made.

The Boote planning application is now in the hands of Uttlesford District Council. The Parish Council has not objected.

The new Felsted Health Centre

Mulberry Homes is keen to begin the build of the new Felsted Health Centre on its new development in Station Road and the John Tasker House practice has now agreed to move the Felsted practice into the new premises. Unfortunately, bureaucratic delays resulting from the demise of the West Essex Clinical Commissioning Group and the emergence of a new authority, the Integrated Care Board, have been unhelpful. The Felsted Community Trust is working tirelessly to bring the project to completion.

Biodiversity

During April and May a Green Space Management Plan for Felsted was produced by Essex Ecology Ltd, the ecological consultancy of Essex Wildlife Trust (Note: The costs of the survey were covered by available grants).

The plan provides advice on how grassland areas under the care of the Parish Council can be managed to enhance their value for wildlife with recommendations for habitat creation and enhancement measures provided.

Twenty-four parcels of grassland and the allotments were visited, some consisting of multiple areas of land. A survey to assess the composition of the grassland was undertaken with a species list created for each parcel of land, identifying both positive and negative grassland indicators.

What's going on in Felsted

Following the appraisal, the Parish Council is planning to introduce changes to the grass cutting regime in three areas of the parish and to introduce areas of wildflowers. Residents may therefore notice that the grass will be allowed to grow longer in these locations: on Watch House Green, an area of Bannister Green and the play area at Willows Green. Care will be taken to maintain visibility at road junctions.

It is also anticipated that there will be a number of bird boxes, bat boxes and insect 'hotels' introduced at various locations around the parish.

A working group has been established to undertake this and other future work around biodiversity and the Parish Council would welcome any parishioner who might wish to participate in the working group meetings and activities.



The Swan Inn

**The Swan Inn
is coming back!**

As some of you will already be aware, the renovations to the pub have been ongoing for some time! Given the extent of the refurbishment, things have remained reasonably on track and the project has evolved a little more than anticipated following feedback from several local people. We would like to thank all the locals who have offered us their cracking advice, invaluable historical knowledge and of course, their excitement for our fast-approaching opening...

We will let you all know over the coming days and weeks when our doors will be once again open for business!

You're Invited!

**The Big Felsted
Christmas Tree
Light-up**

**Saturday
2 December 2023**

**(Woodley's car park
next to Linsells)**

Save the Day

**Watch the Parish
Council Facebook
Page for more
details.**

Felsted History Recorder

Hello everyone. My name is Bryan Grimshaw and I am very pleased to be the new Felsted History Recorder, taking over from Jules Wallis.

My job is to record events, large and small, in Felsted and I hope to produce an annual report. To that end I will always be pleased to hear from you informing me of anything I might otherwise miss. Pictures will be especially welcome. Just as we often wonder what the village was like in years gone by, I suspect our descendants will also be interested in what was happening in 2023.



My predecessors have handed over to my care a large quantity of historical material which includes a great number of images. I will be pleased to add to this anything relevant to Felsted which you no longer require, perhaps if you are moving or clearing a house. I can, of course, copy documents or photos if you are willing to share them.

If I can ever help with any queries you have, I will be happy to assist. You are welcome to email me at felstedhr@hotmail.com. Meanwhile, I urge you to take photographs of our village; it is constantly changing and that scene which you are used to seeing every day is well worth recording for future generations.



CRIX GREEN MISSION HALL

Built in 1866 as a school for the children and for religious services, the Crix Green Mission was originally vested in the Vicar and Churchwardens and the Overseers of the Poor.



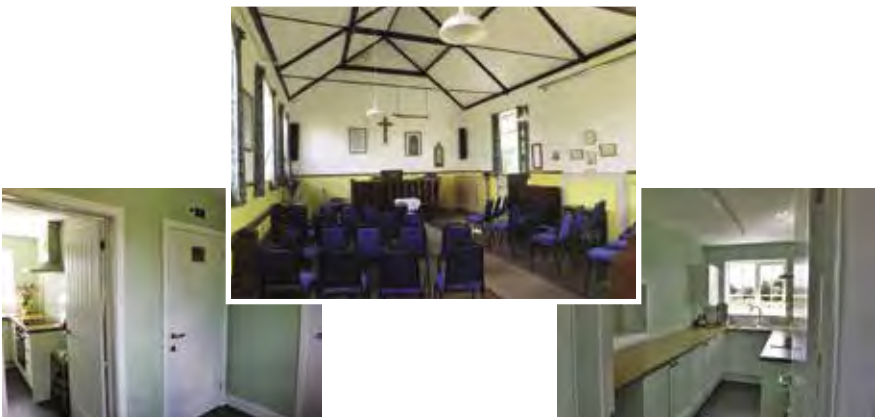
Like many religious establishments, it has had a sometimes turbulent and uncertain history. However, on 29 November 1988 the Charity Commissioners for England and Wales formulated the present Crix Green Trust, confirmed with Felsted Parish Council as the Custodian Trustee of the charity managed by seven trustees.

With the death of Miss Rosalie Amos in January 2023 it was no longer possible to continue regular Sunday services at the Mission Hall. However, with the support of Felsted URC occasional joint services take place and to date three funeral services this year.

With the support of Felsted Parish Council, the Crix Green Trust demolished the original lean-to housing a toilet and small kitchen and extended the building in traditional form to house a lobby, modern kitchen, disabled and separate gender toilets. Over the years the adjacent cottage has also been extended and improved and is now be let at a commercial rate which has helped ensure the survival of the Mission Hall.

The Crix Green Mission is a now a clean modern and well-managed facility available for hire for small scale private events and is also suitable for exercise classes and similar uses.

Please contact: Graham Harvey 07742 513079



Felsted Primary School



As I write this the staff and children are all (hopefully) enjoying a well-earned rest after what has been a very busy and productive year. One major change we have made this year is the use of OPAL Outdoor Play and Learning. We have spent a whole year working towards an award and are very proud to say we have achieved the Platinum level.

"Felsted Primary School has just achieved Platinum award status from OPAL Outdoor Play and Learning. This means that they are in the top 0.5% of UK schools for the quality of the play they provide for all their children. The school has demonstrated that it takes the UNCRC Article 31, the child's right to play, seriously and is implementing all stages of school improvement in relation to play, including policy, planning, resourcing, staffing and evaluation."

Michael Follett BA Hons Ed, PGCE OPAL Founder and Director

We also had a very enjoyable Sports Week which got off to a very exciting start with a visit with world champion tumbler, Jaydon Paddock. The children learned about his journey and hopes for the future. They worked extremely hard to complete their circuits and were fabulous supporters of each other. The children took part in lots of events during the week to develop team building and competition.

Our final week of the summer term was jam packed with events – we had a writing residency with Writing for Pleasure which was very successful and has helped us to build on the improvements we have made. We also had an art workshop and the results of this are installed in a corridor. The children all worked with an artist to help create a beautiful rainbow.

Of course, not forgetting our wonderful Year 6 who worked incredibly hard on their SATs and also in putting on a wonderful show, The Wizard of Oz. We were all blown away by the talent and confidence the children showed. I will be thinking of them in September as they start the next phase of their education and I am sure they will all go on to do great things!

September also brings us a fresh set of new Reception children and I look forward to meeting them all and getting to know them over the coming years. They will be made very welcome by all the staff and older children and this will be the start of an exciting and enjoyable journey for them.

Bryony Collins - Headmistress



FELSTED FIREWORKS

Friday 3 Nov

Felsted Primary School

TES Boarding School of the Year 2023

Felsted School has been named the top boarding school in the UK by TES (Times Educational Supplement). The award is based on academic achievement, plus the 'innovation, imagination and effort that goes into developing children in ways that go beyond the league tables'.

Dubbed the 'Oscars of Education', the Tes Schools Awards are judged by a panel of experts including school leaders and education researchers. Now in their 15th year, they celebrate the extraordinary commitment, quality and innovation shown by teachers and support staff across the UK.

Tes editor and chief judge of the Tes Schools Awards, Jon Severs, said: "With these awards we honour the education community, who we've served for nearly 113 years. This year has seen some incredibly high-quality entries."

Chris Townsend, Felsted Head, commented: "We are delighted to win this prestigious award, which recognises the hard work being put in across the school by pupils, staff and parents.

"We are incredibly proud of what all the staff at Felsted do on a day-to-day basis to make it the boarding school that it is. It's only through everyone's immense efforts that we're able to make such a difference.

Felsted is more than just a school, it is a way of life, and the boarding ethos helps to make it such a strong community. Through this, students are encouraged to develop as individuals and to go out and make a positive difference in the world, wherever they end up and whatever they are doing."



DISTRICT COUNCILLORS' CORNER

Local Plan

The Summer holiday is over and the Autumn programme of work and meetings for Councillors at Uttlesford District Council will intensify. In fact, there is no Council 'recess' in August and meetings are held in that period. For those of us having portfolio responsibilities as Cabinet Members, there are also additional commitments to meet.

One body which has been meeting in recent weeks is the Local Plan Leadership Group which will soon be providing guidance to council on the policies to be included in the new District Local Plan. The new plan is desperately needed, since the current plan is very out of date, being made 18 years ago. Two subsequent attempts, in 2012 and 2019, at making a replacement plan were rejected by the Planning Inspectorate as being unsatisfactory.

What is a Local plan? Most Residents will be familiar with its purpose but in summary, once made after examination in public by the Planning Inspectorate, it stands as a blueprint to identify, in general outline, areas where additional housing, sites for businesses and other infrastructure (including schools and health facilities) can or cannot be located during the plan period, which will run until 2033. The vision and aspirations for future growth will be described in it, together with detailed policies on the environment, landscape, heritage and many other updated topics and against which individual planning applications will be decided.

We are finally coming into the last lap of a four lap event for the Local Plan and early this Autumn (week beginning 30 October) a draft plan will be published proposing draft policies and also setting out where in the district potential development might be permitted. Additional housing across the district is needed and the government in fact requires Uttlesford to plan for about 700 additional houses every year on average during the plan period, going towards its national annual build target of 300,000 additional homes.

Residents will be able to comment on this draft and make submissions on it during the six week period after publication and I will ensure that reminders of what is happening are circulated widely closer to the time. I hope that as many residents as possible will put forward their comments and representations. This stage is

DISTRICT COUNCILLORS' CORNER

known as Regulation 18 and once all the input on the draft is considered and taken into account, then in Summer 2024, an updated version (Regulation 19) will be submitted for the Planning Inspectorate to begin its work.

As I explained to residents whom I met during the pre-election period, the increase in the population of Uttlesford in the last decade has been very high (15-16%) and shows no sign of slowing down. Economic growth in the district is strong and it is against that backdrop given also the presence of the M11, A120, two nearby train lines, as well as Stansted Airport and other employers, that our district is considered a desirable and accessible place to live and work and where housing and employment needs have to be met.

I would encourage all residents to sign up for updates at www.uttlesford.gov.uk/local-plan-news and also to follow the timetable which is available at www.uttlesford.gov.uk/local-plan-timetable. A set of Local Plan FAQs has been prepared also which I think are very useful as well as readable in plain English and they are to be found at <https://www.uttlesford.gov.uk/article/4923/Local-Plan-FAQs>. Updates are also provided by means of social media. The main page on the UDC website referring to the Local Plan is worth bookmarking since it contains references, to be added to in coming weeks, to the technical evidence which will have been used in arriving at the draft Regulation 18 policies. I will keep our community advised of further news and if anyone has any questions to ask meanwhile, please feel free to drop me a line or pop in when a constituents' surgery is held in the URC Hall at 1730 immediately before the Parish Council meeting on the first Wednesday of every month. A detailed monthly report is delivered to the Parish Council also, included in their monthly minutes, but if anyone would like to receive a personal copy, please let me know and I shall be delighted to send it to you.

Best Wishes

District Councillor

John Evans
cllrevans@uttlesford.gov.uk

Richard Silcock
cllrsilcock@uttlesford.gov.uk

The Hundred Parishes

www.hundredparishes.org.uk

The Hundred Parishes is blessed with an exceptional number of museums, all open at this time of the year.

Saffron Walden Museum was purpose-built in 1835. It displays a real treasure trove of material relating to the local area.



Imperial War Museum, Duxford is enormous, displaying all kinds of wartime material including its own listed buildings from each World War, as well as many aeroplanes, both civilian and military.

Great Dunmow Museum is housed in a former maltings. It encompasses displays about its former function as well as broader elements of Dunmow history.



Forge Museum in Much Hadham includes metal tools from the forge, while its own medieval wall paintings reveal an insight into Tudor fashion. Still in Much Hadham, the hamlet of Perry Green was for many years the home of sculptor Henry Moore. Today, the Henry Moore Studio and gardens includes an extensive outdoor display of his large works and indoor history of his life.

The Hundred Parishes

www.hundredparishes.org.uk

Ashdon Village Museum has an exceptional display of all aspects of local life in the 20th century - and an excellent tea room.



Stansted Mountfitchet has an extensive toy museum within Mountfitchet Castle which is itself a popular destination for children who probably don't realise that this fun place is teaching them a lot about the history of Norman times.

Finchingfield's 15th-century Guildhall incorporates a small collection of local history, presented with help of modern technology.

Great Bardfield has a small Cottage Museum and also a village cage, a former lock up.

Further information for each of these can be found on www.hundredparishes.org.uk – either towards the end of the relevant Parish introduction, on What's On, or on the Attractions pages. There, you will also find information about Fry Art Gallery, Linton Zoo, Hinxton watermill and several windmills. We are, indeed, blessed.

Ken McDonald, Secretary



Chrishill Windmill



Hinxton Watermill



MICHAEL J WALSH

FUNERAL DIRECTORS

A DIGNIFIED AND CARING APPROACH

Michael J Walsh Funeral Directors is a local family business that has been providing a professional, caring, dignified and an affordable service to the Great Dunmow area for over 100 years.

As well as providing traditional burial and cremation packages, in June 2022 we completed the building of Dunmow Crematorium, which we run alongside our established funeral services.

FUNERAL SERVICES FROM

£1125

Check out our cost estimator at
walshfunerals.com or phone us on **01371 856274**



DUNMOW CREMATORIUM

Citizens Advice

We're here to help

We know many people are worried about rising interest rates and are unsure if they will be able to afford their energy bills with autumn on the way. Friendly advisers at Uttlesford Citizens Advice are always here to help. We offer free advice and support and can help you to access:

- Warm homes advice, help with fuel debts and energy efficiency measures
- Benefits applications and entitlements
- Support to apply for Universal Credit
- Information about council tax support
- Budgeting & specialist debt advice
- Support with housing and homelessness issues
- Emergency funds for fuel, food, prescriptions and essential travel
- Local food banks and children's clothes banks
- Support for carers
- Access to support for job seekers

Our advice is available to everyone and is always free, confidential and impartial.

For quick and easy access to advice, visit our video access points. Simply touch the screen to talk to an adviser, just as you would in a face to face appointment.

- Great Dunmow Library - M/T/Th/F 9.30-15.30
- Stansted Library - M/W/F 9.30 - 13.00
- Thaxted Library - Tue 14.00-15.30 & Fri 9.00 - 13.00
- Takeley Old School House - M/T/W/Th 9.00 - 13.00 & F 9.00-13.00
- Elsenham and Hatfield Health - COMING SOON!

For online advice go to www.citizensadvice.org.uk

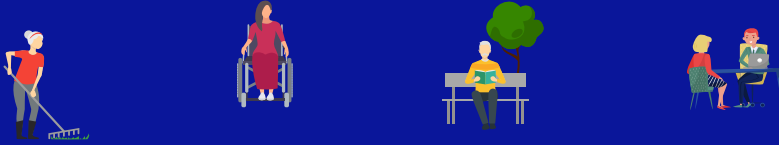
Call us on 01799 618840

Email help@uttlesfordca.org.uk

To access over 150 local health, wellbeing and community groups go to www.uttlesfordfrontline.org.uk

Uttlesford Citizens Advice
Barnards Yard, Saffron Walden
CB11 4EB
01799 618840
help@uttlesfordca.org.uk
www.uttlesfordca.org.uk





Are you looking to make changes
to improve your social, physical
and mental wellbeing?



**Live Well Link Well is free and confidential support
of a non-medical nature. We can help you with:**

- **Healthy living**
- **Quitting smoking**
- **Physical and mental wellbeing**
- **Independent living**
- **Mobility and equipment**
- **Home adaptations**
- **Safety and security**
- **Looking after someone**
- **Social Inclusion**
- **Getting out and about**
- **Money worries**



How do I access the support?

If you are aged over 18 and live in Essex

T: 0300 303 9988

(Monday to Friday from 8am – 7pm)

E: livewell.linkwell@nhs.net

Falcon Bowling & Social Club

Facilities second to none in the UK

Only 10 to 15 minutes from your home

*Indoor, outdoor and short mat bowling
for all ages all year round.*

All standards of bowlers catered for

Coaching available

*FREE Taster Sessions
every Friday at 6.30pm
available to all newcomers if required
(all equipment supplied)*

Restaurant and Bar facilities.

Contact details below or just pay us a visit:

Channels Drive, Chelmsford CM3 3FB
01245 443666

Email, info@falconbowlingclub.co.uk
www.falconbowlingclub.co.uk



Enjoyment, Companionship and Exercise

These are the some of the benefits the bowling community brings into peoples lives



01787 383103

07956 665272 / 07506 614193



FAMILY RUN COMPANY WITH 40 YEARS EXPERIENCE

**DOMESTIC &
COMMERCIAL
DRAINAGE**

SERVICES INCLUDE

- SEWAGE TREATMENT PLANTS & SEPTIC TANKS
- 24 HOUR EMERGENCY SERVICE
- BLOCKAGE CLEARANCE
- CCTV SURVEYS
- DRAINAGE EXCAVATIONS
- DRAIN DESCALING & ROOT REMOVAL
- WATER MAIN REPAIR & INSTALLATION



www.ashenviroltd.co.uk



ashenviroltd@gmail.com

R. Wheeler

ROOFING SERVICES



**TILING | SLATING | LEADWORK | GUTTERING | FLAT
ROOFS | CHIMNEYS | ALL REPAIRS**

| Free Estimates | All work guaranteed |
| Over 30 years Experience |
| Honest & Expert Advice |

Home: 01371 811308 • Mobile: 07951 349837
RWheelerRoofing@gmail.com



Live well, *your* way

Start your home care journey with
Home Instead® today.

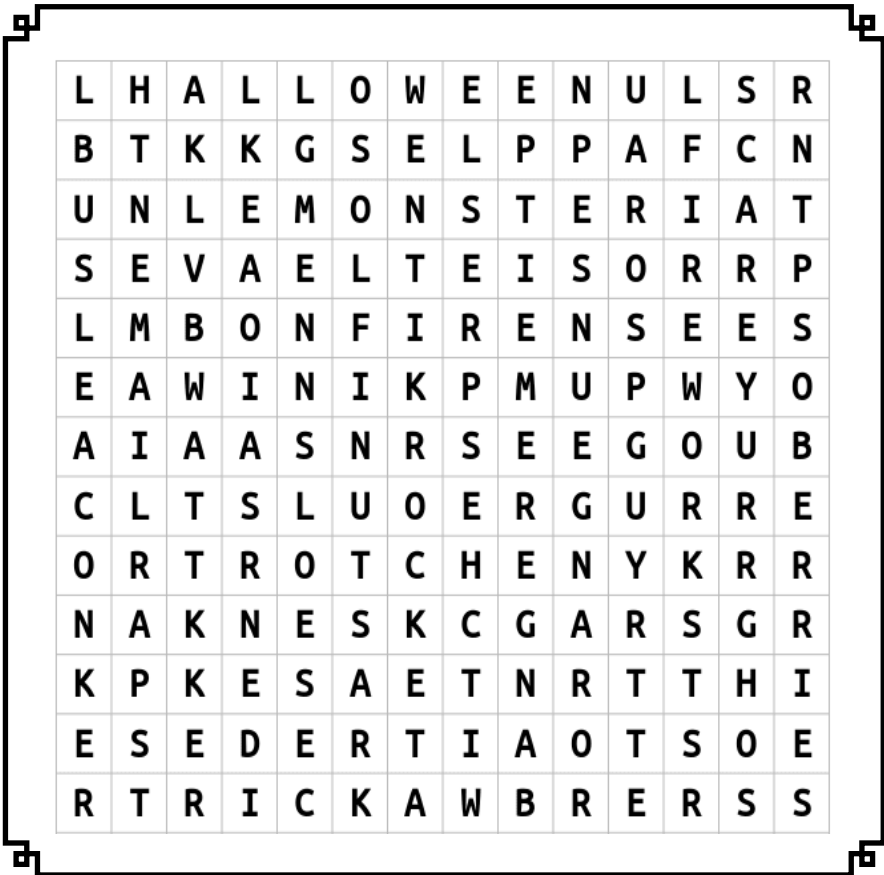
- ♥ Home Help
- Personal Care
- ♦ Companionship
- ◆ Dementia Care

01376 319100
mike.sheehy@Braintree.HomeInstead.co.uk

Each Home Instead franchise is independently owned and operated. Copyright © Home Instead® 2021.

PUZZLE PAGE

Word Search - Autumn



Word bank

- | | | | |
|-----------|---------|------------|---------|
| FIREWORKS | RED | SPARKLER | BANGER |
| APPLES | CONKERS | MONSTER | SLOES |
| PUMPKIN | TRICK | ORANGE | WITCHES |
| NUTS | GHOST | BERRIES | ROCKET |
| HALLOWEEN | TREAT | PARLIAMENT | SCAREY |
| LEAVES | BONFIRE | GUY | |



**Sustainable
Warmth**

**Green Homes Grants could
make your home more
energy efficient and save
you money this winter**

**During the winter months,
we use the heating at home
more to stay warm.**

If you live in Uttlesford, find it hard to heat your home and worry about your energy bills, a Green Homes Grant might be able to help.

You could qualify for help if you live in an energy inefficient home, which is owned or privately rented, and you are in receipt of benefits or are on a low income.

What is the Green Homes Grant?

The Green Homes Grant scheme is a UK Government funded initiative supporting local projects to make energy saving improvements in your home, helping to reduce household fuel bills and make homes warmer.

How does it work?

Warmworks is the Managing Agent delivering this scheme on behalf of Uttlesford District Council. Following a survey of your property by a qualified surveyor at a convenient time, they will recommend a package of improvements that is suitable for your home.

**Get in touch today to find
out more about Green Homes Grants**



0808 196 8255



surveys.est.org.uk/s/GreenHomesGrantSchemeLAD



Please note that the repair or replacement of fossil fuel systems such as gas, oil and LPG boilers is not offered as part of this scheme





Adult Learning
Within Reach

Felsted Branch Autumn 2023 OCTOBER COURSES

"Every Picture tells a Story" with Margaret Mills

Course Code Q00010591

Fee: £37.80

6 sessions of 1.5 hours;

URC, Stebbing Rd

MONDAY evenings 19.45 - 21.15 From 2nd OCTOBER

"Why Shakespeare?" with Ron Marks

Course Code Q00011016

Fee: £50.40

6 sessions of 2 hours Royal British Legion Hall

THURSDAY mornings; 10.00 - 12.00 From 5th OCTOBER

Enrolment 03003 033464 option 1

More info. at: felsted.branch@wea.ac.uk

The WEA is a charity registered in England & Wales; number 1112775

• Compliment Slips • Business Cards • Parish Magazines • Scrap Pads

Invoices/Estimates/Contracts • NCR Sets, Pads, Books • Christmas Cards • Draw Tickets • Envelopes



01787
469628

Email: sales@paulclarkprint.co.uk
Web: www.paulclarkprint.co.uk

All of our printing is produced using Carbon Capture paper, helping to create new native woodland and capturing CO2



Helping capture CO₂
and plant trees



• Leaflets • Posters • Menus • Banners • Price Lists • Booklets • Stickers • Labels • Letterheads

• Business Packs • Loyalty Cards • Invitations • Orders of Service

OLD PARK MEADOW NATURAL BURIAL GROUND



- We offer burial & ash interments, services and wakes.
- Adaptable to any ceremony and a completely personalised service from plaque to music.
- Reserving a plot in advance is also possible.
- Assurance of a caring & compassionate experience.

Coppice Lane, (behind the Butchers Arms Pub)

North End, Between Chelmsford &

Great Dunmow, Essex CM6 3PL

Tel: 01245 806332

Email: info@oldparkmeadow.co.uk

Website: www.oldparkmeadow.co.uk



A & W Gowers LTD

Specialist Joinery Manufacturers

A local family run joinery manufacturer, who provide bespoke joinery to the trade and public.

Whether it be the smallest mould, through to windows, doors, furniture or to the largest orangery.

Quotations are provided free based on architectural detail, photography, or sample copy. Additional services include CAD detailing, finishing, glazing and hardware supply.

Windows
Doors
Conservation
Gates
Stairs



Fitted
Furniture
Kitchens
Wardrobes
Bookcases

...and much
more

For free friendly advice and estimates please contact us at

www.awgowers.co.uk

Howe Street, Great Waltham, Chelmsford

Telephone: 01245 362737

Now selling eco-friendly stove briquettes



Looking for
your next
office space?

www.ongarbusinesscentre.co.uk/

EMAIL

contact@ongarbusinesscentre.co.uk

MORE THAN JUST BUSINESS SPACE...

Managed workspaces from 14-81 sqm (150 to 847 sq ft) to let on a flexible and competitive term with easy access to London Stansted and Chelmsford.



AFFORDABLE

Easy in/easy out licenses.
Flexible to suit you.



SUPPORT

Access to practical support, expert advice and networking opportunities



Meeting Rooms available to hire



PHONE

01277 368200



ADDRESS

Ongar Business Centre, The Gables, Fyfield Road, Ongar, Essex CM5 0GA

COOP Funeral Directors

We are here when you need us **24/7**

Independent & Local Co-operative

Award Winning Customer Service

FREE Aftercare & Support Groups

FREE Online Memorials & Tributes

Inflation Proof Funeral Plans



White Hart Way, Great Dunmow CM6 1WX

☎ **01371 875542**



funerals.chelmsfordstar.coop Part of Chelmsford Star Co-operative Society Limited.

LOCAL SERVICES DIRECTORY

Al-Anon

An organisation that supports families/
friends of problem drinkers
www.al-anonuk.org.uk/

BUSES

133 Network Colchester: 01206 877620

16 Stephenson: 01376 503050

DigiGo Bus: 03330 137138

www.digigo.uk

Traveline: 0871 200 22 33 or

www.travelinesoutheast.org.uk

CITIZENS ADVICE BUREAU

Braintree: 01376 324129

Great Dunmow: 01799 618840

COUNCILS

Essex County Councillor:

Martin Foley: 01799 510510

cllr.martin.foley@essex.gov.uk

Uttlesford District Council: 01799 510510

District Councillors: - Sandi Merifield

cllrmerifield@uttlesford.gov.uk

John Evans: cllrevans@uttlesford.gov.uk

Felsted Parish Council

Chairman: Graham Harvey

Clerk: Heather Read

Parish Office: United Reformed Church Hall,
Stebbing Road, CM6 3JD

Office Tel: 07719 552174

Office hours: Mondays: 10:00 - 12:30

and Wednesdays: 16:00 - 18:30

email: clerk@felsted-pc.gov.uk

www.felsted-pc.gov.uk

DOCTORS

The Surgery, Braintree Rd.

Tel: 01371 820410

Out of hours: 01371 872121

ELECTRICITY

and network emergencies:

Tel: 0800 7838838, 0800 0280247

and 08701 963090 (daytime)

GAS

National Grid & Emergencies

Tel: 0800 111999

HOSPITALS

Broomfield including Casualty

Tel: 01245 362000 MEMBER OF PARLIAMENT

Kemi Badenoch

kemi.badenoch.mp@parliament.uk

MEMORIAL HALL

Lettings - Sheila Kill

Tel: 07926 377343

felstedmemhall@gmail.com

POLICE for our parishes

Essex Police Main Telephone Numbers:

Emergencies: 999

Non-Emergency Tel: 101

POST OFFICE

Felsted

Tel: 01371 820251

www.postoffice.co.uk/branch-finder

SCHOOLS

Felsted School:

Tel: 01371 822600

Felsted Preparatory School:

Tel: 01371 822610

Felsted Primary School:

Tel: 01371 820215

Fritch Green Academy:

Tel: 01371 822330

Ford End C of E Primary School:

Tel: 01245 237209

Email: admin@fordend.essex.sch.uk

Website: www.fordendschool.com

Helena Romanes School:

Tel: 01371 872560

Whipper-snappers Daycare Nursery
and Kids Club

Tel: 01371 821131

SEWERAGE

Anglian Water - sewerage

(not water, see below) Tel: 03457 145 145

WATER

Affinity Water

Supply problems and emergencies

Tel: 0345 3572407

TRADE DIRECTORY

ANDREW BANKS – Good with wood.

Flooring, Decking, Garden Furniture & more.
Supply, installation, renovation.
Free consultation. andrewbanks.co.uk
01279 626389

BEAUTY & HOLISTIC TREATMENTS

The Retreat, Dunmow
01371 878989
www.theretreatdunmow.co.uk

BINGS HALL

We are a small, friendly, family orientated care home in Felsted available for either respite or permanent care.
Contact Carla – Manager on 01371 820544
Mobile 07889 840274 or pop in to Bings and have a tour and a chat.

CLEAR SIGHT DRONES

Aerial photography. Have your property photographed by professional drone pilot.
Services also include roof surveys, boundary line identification.
Tel. Clive 01371 820330 / 07979 054654

FAMILY FUNERAL DIRECTORS

Daniel Robinson & Sons Ltd. 24 hr personal service. Pre-payment funeral plans.
Haslers Lane, Gt. Dunmow.
Tel: 01371 874518

FELSTED PROPERTY MAINTENANCE

Property maintenance and improvements.
Free estimates given.
Tel: Clive Perrins 01371 820330
mob: 07979 054654
www.felstedpropertymaintenance.co.uk

FELSTED CONSTRUCTION LTD

General builders,
Established in the village 30 years.
Tel: Michael Sutton 07976 933861
or 01371 820136.

HOMEOPATH

Experienced, fully qualified and registered homeopath based in Cock Green.
Contact Steph Sellers
Tel: 01371 823028. Mob: 07986456747
Email: stephsellers2000@gmail.com
Website www.stephsellershomeopathy.co.uk

P. JUDGE CONSTRUCTION SERVICES LTD

Brickwork, Repointing, Restoration and Hard Landscaping
Based in Bannister Green
Tel: 01371 499730/ 07734 862839
www.judgeconstruction.co.uk
email: info@judgeconstruction.co.uk

P. JUDGE CONSTRUCTION SERVICES LTD

Gutter clearance service with full camera inspection. Fully Insured. Work carried out safely from the ground. 01371 499730 / 07734862839
www.judgeconstruction.co.uk

PHYSIO IN FELSTED

Experienced local Chartered Physiotherapist offering Ultrasound, Acupuncture, Manual Therapy, Exercise Therapy and Integrated Myofascial Release.
Tel: 01371 821063 · mob: 07958339574.
email physioinfelsted.co.uk

RPT Professional Chauffeur Service

Based in Hartford End Felsted, RPT offer a bespoke professional chauffeur service tailored to meet your individual travel requirements.
www.rptchauffeurservice.co.uk
01371 829353 · Mob: 07836 749367

ROOFING SERVICES R WHEELER

Slating, Tiling, Flat Roofs, Guttering, Repairs, Chimney work, Local, Reliable, Free Estimates.
email: rwheelerroofing@gmail.com
01371 811308 · mob: 07951 349837

S. RAYNER - CARPENTER & JOINER

All carpentry & property maintenance.
Over 30 yrs experience in carpentry & fitting kitchens. Call: 01371 820576
mob: 07768 914172. Free quotes.

TUTORING IN MATHS & SCIENCE

Most subjects offered to A level by current examiner. Contact Dick Frost,
Tel: 01371 820824 · mob: 07909 526713
email: richard.j.frost@btinternet.com

WINDOW CLEANER

with 20 years local experience.
Tel: Eddie Driscoll mob: 07941 776705
or 01245 360540

digi go

on demand



DigiGo - Travel on demand

DigiGo is a form of shared public transport that has no fixed route or timetable - travel freely anywhere within the operational area

- The service can be booked on-demand (within 15-20 minutes) or up to 7 days in advance

- All single fares are capped at £2 until 31 October 2023

- DigiGo operates 7 days a week, from 7am until 10pm, excluding Bank Holidays

Visit www.digigo.uk for more information



How do I book?

Scan here to download the **TravelEssex** app and book a DigiGo journey



Alternatively, we have a telephone booking option for those unable to use the app 03330 137 138., available Monday to Friday, 10am till 12pm (excluding bank holidays)



Book, Track, Ride
via the **TravelEssex** app